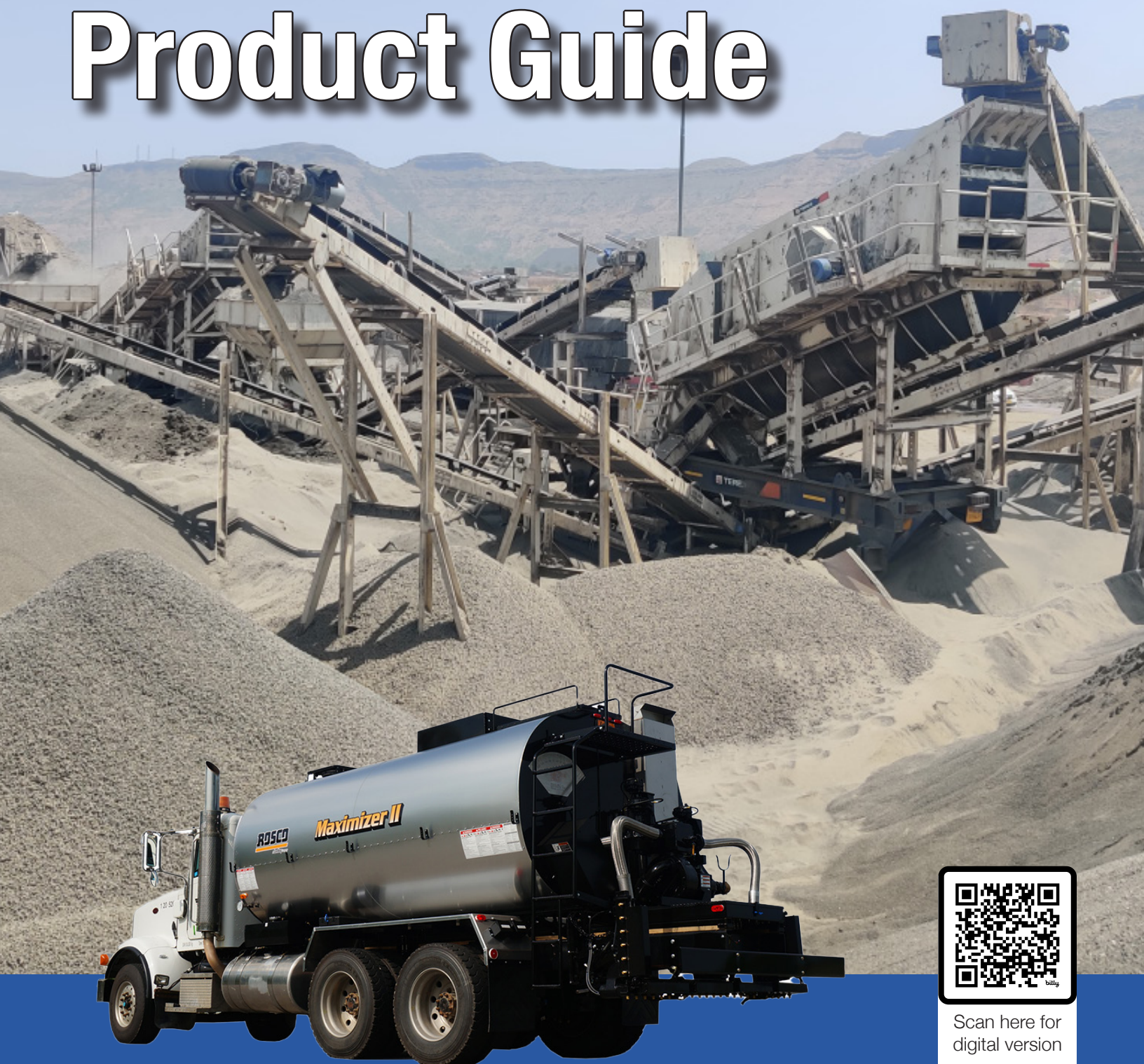




Product Guide



Scan here for
digital version

Contents

RJ Team.....	3
Sales Team.....	4
Our Product Support Sales Representatives.....	4
Our Products.....	5
Industries We Serve.....	5
Aggregate.....	6-7
Asphalt.....	8-10
Lifting & Hoisting.....	11
Paving & Concrete/Masonry.....	11
Trailers.....	11
Environmental Processing.....	12-13
Our Family of Companies.....	14
Parts & Service.....	15
Used Equipment.....	15
Cooperative Purchasing.....	15
Rental Guide	
Rental Terms & Policies.....	17
Rental Equipment.....	18
Rental Rates.....	18
Financing & Credit.....	18



Quality Road Construction and Mining Aggregate Equipment

Since 1936, Ruffridge Johnson Equipment Company (RJ) has been a trusted leader in the construction and mining equipment industry. Built on a tradition of customer-focused service, we continue that legacy today by delivering top-quality equipment and embracing the latest technologies.

In May 2024, RJ was proudly acquired by Road Machinery & Supplies Co. This partnership strengthens our ability to serve customers by expanding our resources and offerings while maintaining the dedicated, local service our customers have come to expect.

We offer a comprehensive range of road construction and aggregate equipment for sale and rental, including jaw crushers, cone crushers, aggregate screening and washing equipment, heavy construction equipment, as well as service and repair for all equipment lines.

For over 80 years, RJ has proudly supported the road-building industry by partnering with leading manufacturers. Our experienced team is committed to providing unmatched support and serving customers across the Twin Cities and greater Minnesota area.

rjequip.com

612-378-9558



Our Team

Dave Hosch

General Manager
daveh@rjequip.com
651-890-2317

Mark Westergaard

Territory Manager
markw@rjequip.com
605-202-0653

Kenny Rutford

Parts Specialist
kenr@rjequip.com
651-707-5602

Delton DeMarce

Field Technician
deltond@rjequip.com
715-307-2830

Doug McDonald

Territory Manager
dougmc@rjequip.com
218-591-0969

Tyler Marz

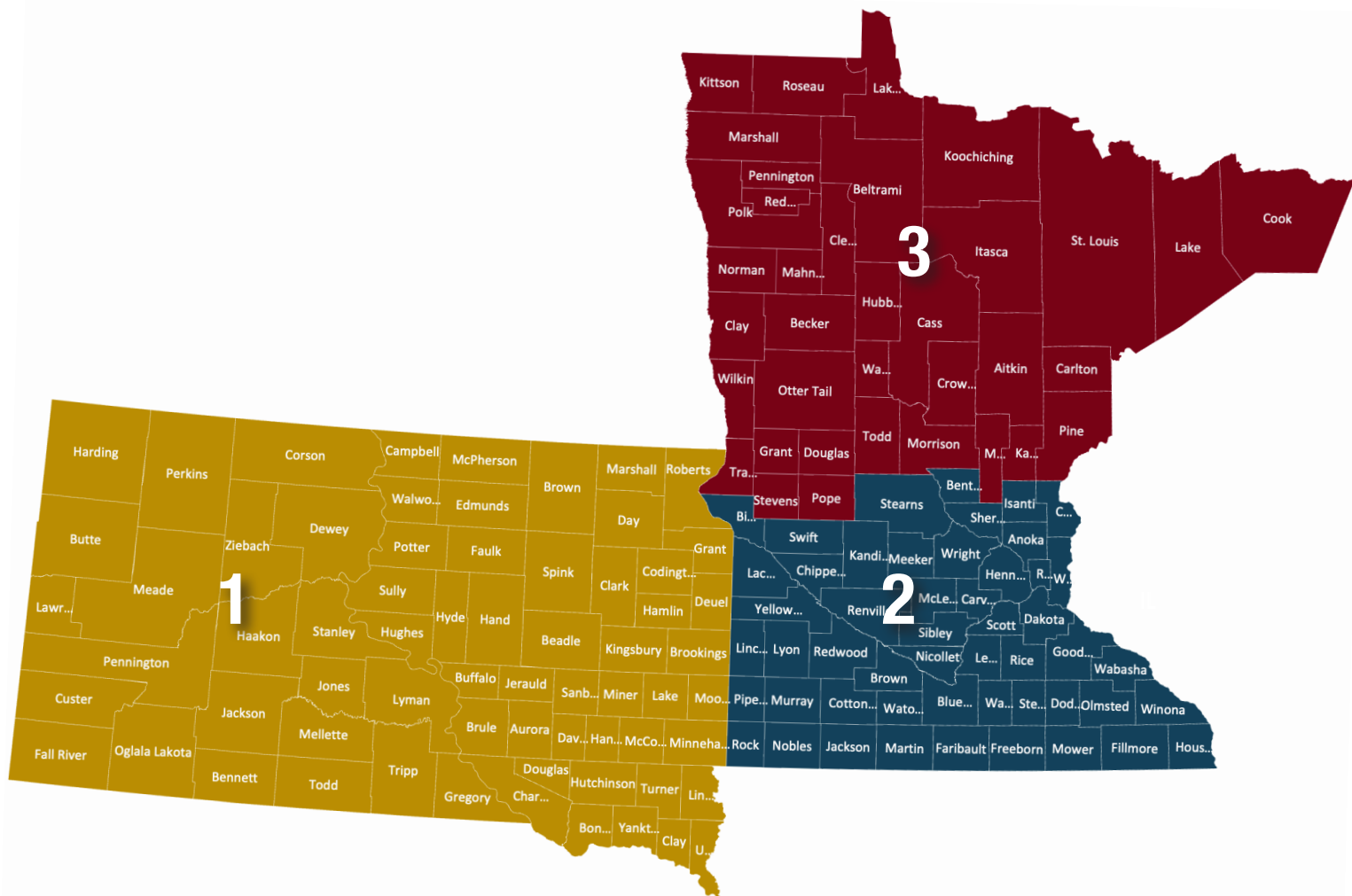
Territory Manager
tmarz@rmseq.com
952-895-7084

Bob Dousette

Parts Specialist
bobd@rjequip.com
763-438-2830

Matt Bialka

Shop Technician
mbialka@rjequip.com
651-210-9208



Sales Team

Territory Managers

1. Mark Westergaard

markw@rjequip.com
605-202-0653

2. Tyler Marz

tmarz@rmseq.com
952-895-7084

3. Doug McDonald

doug@rjequip.com
218-591-0969

Our Product Support Sales Representatives

Tom Burrows

Product Support Sales
Representative Sales Manager
tburrows@rmseq.com
952-895-7061

Kyle Gugisberg

kgugisberg@rmseq.com
218-207-2792

Keith Podges

kpodges@rmseq.com
952-521-3171

Eric Sherrill

esherrill@rmseq.com
952-895-7050

Jim McLean

jmclean@rmseq.com
952-223-3754

Our Products



Industries We Serve

Aggregate

Demolition

Road Construction
Equipment

And more...



Aggregate



Jaw Crushers



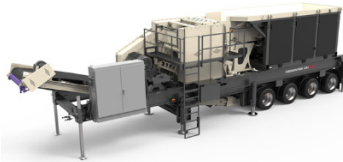
Cone Crushers



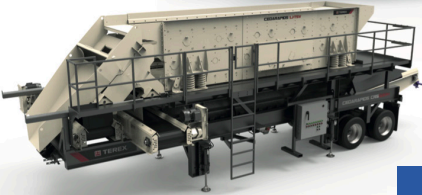
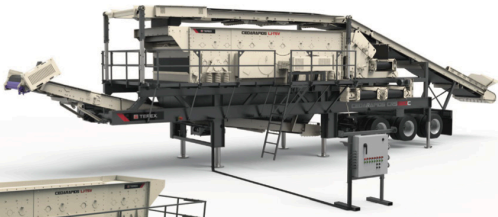
Screens



 **TEREX**® MPS



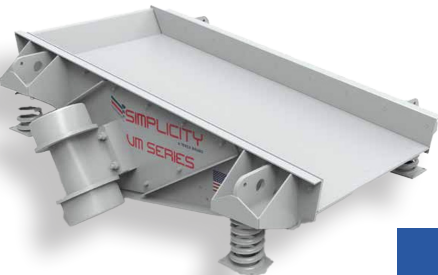
Cedarapids
A TEREX BRAND SINCE 1923



Screens



 **SIMPLICITY**
A TEREX BRAND SINCE 1921



Vibrating Feeders



Wash Plant



Conveyors



Feeders



Crushing Plants



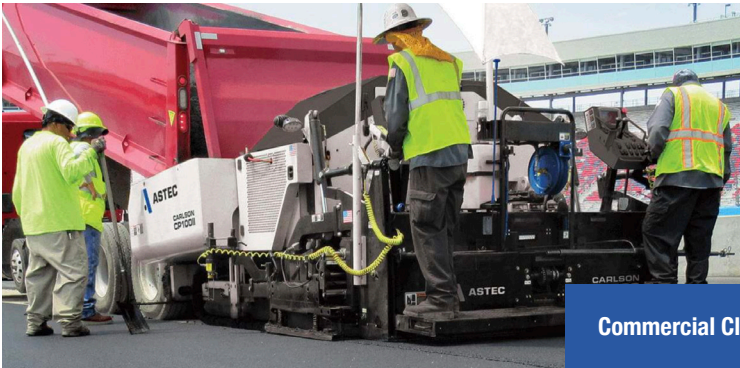
Wash Plants



Screen Plants



Asphalt



Commercial Class Pavers

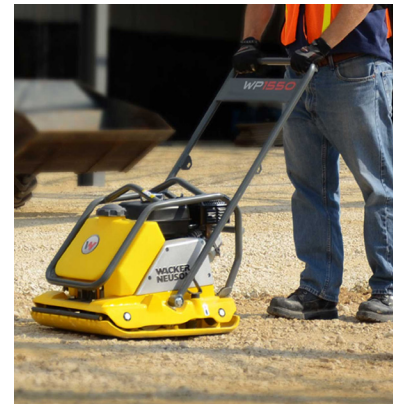


**WACKER
NEUSON**
all it takes!



Articulated Rollers

Rammers & Vibrating Plates



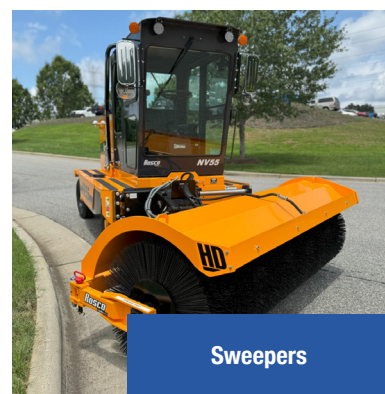
Straight
Frame Rollers



Asphalt



Oil Distributors



Sweepers



Spray Patchers



Commercial Class Pavers



Chip Spreaders



Asphalt



Asphalt Patch Boxes



Asphalt Recyclers



Lifting & Hoisting

SKYTRAK

Telehandlers



Telehandlers & Lifts



JLG

The Power To Do More

Paving & Concrete/Masonry

CRATOS

Battery Powered Equipment



allen ENGINEERING CORPORATION

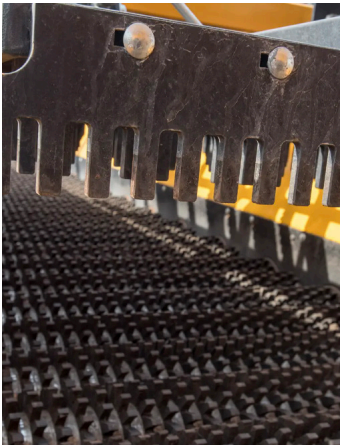
Concrete
Buggies

Trailers



FELLING TRAILERS







Trommel Screens



Our Family of Companies

RMS | MINING SOLUTIONS



RMS Mining Solutions provides machinery, parts and rebuild sales of Komatsu mining trucks and hydraulic shovels to customers around the globe.
rmsminingsolutions.com

U.S. SHORING & EQUIPMENT CO.



U.S. Shoring & Equipment Co. offers Barbo boring machines and directional drills. We rent and sell a broad range of trench shoring products, trench boxes, road plates, gas detectors, lasers and more.
usshoringandequipment.com



RMS Tritec is a full-service steel facility providing custom-fabricated or machined products. We also help with non-destructive testing and inspection of tanks, piping, cranes and steel structures.
rmstritec.com



RMS Hydraulic Services rebuilds and custom-builds hydraulic cylinders. We also maintain a large inventory of American and Metric rod and barrel stock.
rmshydraulicservices.com



Pit & Quarry Supplies offers a wide range of high-quality wear products to keep equipment running throughout the process – from extraction to loading out finished product. Whether you need bearings, motors, pumps, reducers, belting, wear plate, or custom solutions, we have solutions geared to help you optimize your operations and increase profitability.
pitandquarrysupplies.com



RMS Rentals has a wide range of general and light equipment available from industry leading manufacturers like, JLG, SkyTrak, Wacker Neuson, Allen Engineering, Multiquip, LeeBoy, Potain and many more.
rmsrentals.com

Parts

Keep Your Machines Running at All Times

Even a minor part problem can cause major downtime. If you experience a breakdown and are in need of a specific part, RMS offers a variety of solutions:

- New Parts
- Used Parts
- Surplus and Aftermarket Parts
- Major Component Rebuild

Service

Professionally Trained. Responsive. Knowledgeable.

Unexpected down time is stressful and costly. Our highly-trained team is committed to providing the services, technical support, and product solutions that enable you to get back up and running so you can complete your projects on schedule and within budget.



Order Parts & Schedule Service Online

Visit rjequip.com



Scan here
for website

Used Equipment

High-Quality Used Equipment that offers Savings and Production

We're transparent with the equipment we sell, and our process helps you make an informed buying decision. Our inventory changes regularly, so contact us if you're looking for something specific.

Why buy used? We offer:

- Evaluation reports
- Low rate financing
- Equipment trades
- Used machine leasing
- Certified used machine warranty (when applicable)
- Service & repairs performed by factory trained technicians
- Piece of mind; RMS is a dealer that stands behind our products
- Consignment sales and auction pass-throughs, to save on sales tax & capital gains tax

Used Equipment Contacts

Scott Kropiwka

Used Equipment Manager
skropiwka@rmseq.com
952-895-7070

Sourcewell 
Formerly NJPA

Awarded Contract

Cooperative Purchasing

Contact Your Territory
Manager to Learn More

Sourcewell

Sourcewell, formerly NJPA, is a service cooperative created to provide programs and services to members in the government, education, and non-profit sectors. Sourcewell is authorized to establish cooperative purchasing contracts on behalf of itself and its members. Membership is free and available to all government, education, and nonprofit entities.

sourcewell-mn.gov

Products Offered:

LeeBoy

 **BOMAG**
FAYAT GROUP

FELLING
TRAILERS

Rental Guide



Scan here for
digital version

Rental Terms & Policies

1. Credit: All rentals require a customer to have an open account and are subject to approval by our credit department. Customer is responsible for payment of late fees for overdue accounts.

2. Insurance

A. Liability: Proof of General Liability insurance must be provided to RMS prior to taking possession of equipment. The minimum liability coverage amount is \$500,000 per occurrence, with RMS named as an additional insured. In the event of a claim, Lessee will be responsible for the deductible of \$2,500.

B. Physical Damage: Proof of physical loss insurance is required for the value of each piece of equipment rented. A damage waiver for physical loss can be provided by RMS at an additional cost of 15% of the rental rate billed on each rental invoice. Customer abuse and/or operator error will not be covered under damage waiver protection. Maximum equipment value is \$500,000. Equipment that is used in logging, forestry, aggregate, and mining is covered. Underground operations are not covered.

C. Auto Liability: Minimum coverage of \$1,000,000 with RMS named as additional insured. Only required if customer is transporting equipment on their own.

3. Contract: A rental contract must be signed for each separate order of rental equipment by the customer. In addition, the renter is required to provide complete job site information where equipment will be located including the job number and corresponding bond information, if applicable. Renter is responsible to notify RMS of any/all job or location changes of the rented equipment.

4. Use: Customer will ensure that operators and any personnel hired to haul equipment are familiar with the operation of the rental equipment and have read the operator's manual. If the operator or customer has any questions regarding the proper operation or maintenance procedures, they should contact the RMS service department at 952-895-9595.

5. Rental Purchase Option: 100% of the rent paid to apply toward purchase for the first six (6) months less interest at 3% over prime on the declining balance. After this time rent paid will not be applied to purchase. All repairs and service work not covered by warranty will be added at the time of conversion.

6. Hauling: Customer is responsible for all hauling charges to and from job sites.

It is always the responsibility of the customer, and its designated trucking company, to ensure that the height

of the equipment, after loading, meets the bridge height requirements of its haul.

7. Rates: Rates shown in this publication do not include sales tax or damage waiver coverage. Rates are based as follows:

- Daily - 8 hours
- Weekly - 40 hours or 5 days
- 4 Weeks - 176 hours
- Any overtime hours will be prorated at 50% of the normal rental rate

8. Repairs & Maintenance: While the units are in the possession of the renter, renter is responsible for normal preventative maintenance, as required by the manufacturer. Such items include oil changes, filter changes, greasing, etc.

Any damage to the equipment due to renter abuse or negligence will be charged to the lessee on return of the rental equipment.

9. Additional Responsibilities-Renter: Ensure that equipment is properly secured to transport vehicles. Observe legal weights and dimensions.

Authorize transportation provider to sign shipping papers, checkout/in forms and safety checklists. Charges for abnormal tire wear including cuts, abrasions, and punctures.

Charges for manuals or keys not returned. Return machine with full fuel and DEF tanks or customer will be charged for fuel and/or DEF used.

Cleaning labor in excess of 1 hour, which would include shoveling of tracks.

Excess wear on ground engaging tools, wear items, and undercarriage.

Additional charges as listed on the rental rate sheet for type of equipment rented.

Note: Please note that on the previous rate pages, the operating weight provided is an estimate and will vary depending on equipment options.

Rental rates, terms, and policies are subject to change.

Rental Equipment

Supplement Your Fleet with High-Quality Rental Equipment

Looking to expand capabilities while limiting capital expenditures? RMS offers an expansive rental fleet designed for jobs where investing in a piece of equipment doesn't make financial sense.

We offer:

- A large & diverse fleet of equipment
- Competitive rental rates
- After hours availability
- Rental purchase options
- Short term - daily & weekly rentals
- Long term leases
- Delivery & pick up of equipment
- Damage loss protection

We assist you with:

- Maintaining cash flow
- Equipment equity growth
- Productivity without debt

Rental Contacts

Justina Soller

Rental Manager

*Cedar Rapids, Des Moines,
Duluth, East Moline,
Savage, Sioux City, Virginia,
Upper Peninsula of Michigan*

jsoller@rmseq.com

952-895-7026

Rental Counter

952-521-3110

Rental Rates

Scan here to access our rental rates.



Financing & Credit

Whether you're buying new or used equipment, financing can be an integral part of the transaction. We work with a broad range of lenders to tailor your equipment needs with your financial needs.

Finance Contact

Jeff Boraas

Director of Finance
jboraas@rmseq.com
952-895-7060

Credit Documents

To access our credit application and tax exempt certificate please visit:
rmsequipment.com/construction-equipment/financing/



Scan here for
website

Lifting & Hoisting

Telehandlers

	Model		Operating Weight (lbs)
JLG	G5-18A	JLG, 5,500 lb. capacity 18' fork height	11,000
	742	JLG, 7,000 lb. capacity 42' fork height	22,300
	943	JLG, 9,000 lb. capacity 43' fork height	25,000
	1055	JLG, 10,000 lb. capacity 55' fork height	31,559
	1255	JLG 12,000 lb. capacity 55' fork height	33,960
SkyTrak	6042	SkyTrak, 6,000 lb. capacity 42' fork height	23,520
	8042	SkyTrak, 8,000 lb. capacity 42' fork height	25,365
	10042	SkyTrak, 10,000 lb. capacity 42' fork height	26,883
	10054	SkyTrak, 10,000 lb. capacity 54' fork height	27,200
	12054	SkyTrak, 12,000 lb. capacity 54' fork height	30,357

Telehandler-Attachments

Model		Capacity (lbs)
Truss Boom	JLG truss boom jib, pin on style, 12'	2,000
H200 Trash Hopper	JLG 1.9 cy. self dumping	2,000
Lifting Hook	JLG crane hook, fork slots, hook out to 24"	12,000

MEWP

Boom Lifts

	Model		Operating Weight (lbs)
Electric	JLG E300AJP- Narrow	30' Articulating boom, 36' working height, electric	15,705
	JLG E400AJP- Narrow	40' Articulating boom, 46' working height, electric	14,900
	JLG X600AJ	59' 3" Articulating boom w/jib, 66' working height, electric	6,571
Straight	JLG 400S	40' Straight boom, 46' working height	13,640
	JLG 460SJ	46' Straight boom w/jib, 52' working height	17,394
	JLG 600S	60' Straight boom, 66' working height	22,900
	JLG 600SC	60' Straight boom with full crawler bottom	22,500
	JLG 660SJ	66' Straight boom w/jib, 72' working height	25,400
	JLG 660SJC	66' Straight boom w/jib and crawler bottom	29,339
	JLG 860SJ	86' Straight boom w/jib, 92' working height	36,888
Articulated	JLG 1350SJP	135' Straight boom w/jib, 141' working height	45,000
	JLG 450AJ	45' Articulating boom w/jib, 51' working height	14,150
	JLG 600AJ	60' Articulating boom w/jib, 66' working height	22,691
	JLG 800AJ	80' Articulating boom w/jib, 86' working height	34,738
	JLG 1250AJP	125' Articulating boom w/jib, 131' working height	44,000
Towable	JLG T500J	50' Platform height, 30' horizontal reach, 500 lb. platform capacity, 24VDC electric power	4,800

Scissor Lifts

	Model		Weight/Capacity (lbs)
Electric	1930ES	JLG 19' electric, narrow profile, 25' working height, 30" wide	2,750/500
	2630ES	JLG 26' electric, narrow profile, 31' working height, 30" wide	4,750/500-800
	2646ES	JLG 26' electric, wide stance, 31' working height, 46" wide	4,770/1,000
	3246ES	JLG 32' electric, wide stance, 38' working height, 46" wide	4,975/700-1,000
Rough Terrain	RT2669	JLG 26' diesel, 69" wide, 32' working height	8,058/1,500
	RT3369	JLG 33' diesel, 69" wide, 39' working height	8,856/1,000

Vertical Personnel Lifts

Model		Weight/Capacity (lbs)
1230ES	JLG 12' electric, narrow profile, 30" width, mast lift, 18' working height	1,740/500

Note: 20" x 22" narrow platforms are available upon request.



Digging & Loading

Compact Excavators

	Model	Operating
Battery	CMX18 Cratos 7' dig depth, 40-51" expandable rubber tracks, 48V battery.	3,608
<i>Note: Dig bucket sizes available are 12" and 15".</i>		

Compaction

Rammers

	Model	Operating Weight (lbs)
Combustible	BOMAG BT 50 Working width 230 mm, rammer, 4-stroke engine	128
	BOMAG BT 60 9" x 13" Shoe, rammer, 4-stroke engine	128
	Wacker Neuson BS50-2 10" x 13" Shoe, rammer, 2 or 4-stroke engines	129
	Wacker Neuson BS60-4 11" x 13" Shoe, rammer 2 or 4-stroke engines	154
Battery	Wacker Neuson AS50z 11" x 13" Shoe, battery operated, Includes 2 batteries, 1 charger, estimated run time 30 min.	155

Vibrating Plates

	Model	Operating Weight (lbs)
	WP1550A/W Wacker Neuson 20" x 23" Optional water tank, plate compactor	190
Battery	AP1850E Wacker Neuson 20" Wide plate, battery operated, Includes 2 batteries, 1 charger, estimated run time 45 min.	223
	BPU2540A Wacker Neuson 16" Wide, reversible plate compactor	309
	BPU3050A Wacker Neuson 20" Wide, reversible plate compactor	366
	BPU4045A Wacker Neuson 23" Wide, 9 HP, reversible plate compactor	679
	BPU5545A Wacker Neuson 23" Wide, 15 HP, reversible plate compactor	715
	DPU6555 Wacker Neuson 30" Wide, reversible plate compactor, diesel	988

Rollers

	Model	Operating Weight (lbs)
BOMAG:	BMP8500 24" to 33" Double drum sheepfoot, walk behind roller, remote control, diesel	3,516
	BW900-50 36" Smooth double drum roller, gas	2,646
	BW120SL-5 47.2" Smooth double drum roller, diesel	6,393
Wacker Neuson:	RTLX-SC3 24" to 32" Double drum sheepfoot, walk behind roller, remote control, diesel	3,247
	RD12 36" Smooth double drum roller, gas	2,500
	RD28-120 47.2" Smooth double drum roller, diesel	5,941



Concrete/Masonry

Concrete Buggies

Model

Combustible

AR16	Allen 16 cu ft, stand-on, gas powered
AR16-LP	Allen 16 cu ft, stand-on, propane powered electric start
AR21	Allen 21 cu ft, stand-on, gas powered
AR21-LP	Allen 21 cu ft, stand-on, propane powered electric start
AT16PBES	Allen 16 cu ft, stand-on, gas powered, rubber track

Battery

MCE400-VR	Cratos battery wheelbarrow, 880 lb. capacity, up to 16 cu ft, mechanical dump, 8-10 hour run time, 287 lb. overall weight
Twinca ES500	Cratos battery powered, 32 OAW, 1,100 lb. capacity, up to 4 Mph, 51" dump height, 9-10 hours run time



Concrete Trowels

Model

Allen Engineering TWP446/B46H

Gas/Propane 46" Walk behind, 8 hp Honda

MP215/MP235

Allen Engineering Gas/Propane

6' Double ride-on, 22 hp Honda, mechanical

Allen Engineering HDX600/HTXG6DF

8' Double ride-on gas/propane/diesel hydrostatic drive & pitch

Allen Engineering HDX760

10' Double ride-on, diesel, hydrostatic drive & pitch

Note: Finish blades are provided – pans are available for purchase only. Transport dollies available upon request. Propane and units with scrubbers available upon request.



Floor Strippers

Model

Cratos SHERPA 100 ECO With floor scraper attachment

Note: Blades are available for purchase only.



General Equipment

Generators, Light Tower

Model

G25	Wacker Neuson 20 kW, diesel powered, trailer mount, 63 db
G50	Wacker Neuson 42 kW, diesel powered, trailer mount w/brakes, 66 db
G70	Wacker Neuson 58 kW, diesel powered, trailer mount, cold weather ready
GP5600	Wacker Neuson 5,600 watt, Honda gas engine

*Note: Rates for above generators and light plants are based on "single shift" use.
Double time (2 shifts) = rate x 1.5, Triple time (3 shifts) = rate x 2
Turtles & cords available upon request.*

Paving

Pavers

Model

1000	LeeBoy driveway paver, hopper style, 8'-13' screed	Operating Weight (lbs) 10,000
5300	LeeBoy path paver, 4' to 9' HD screed	13,000
8510/8515/8520	LeeBoy driveway/parking lot paver, 8'-15' legend screed	17,200
8608	LeeBoy 125 hp Kubota tier 4 final engine, electric screed	21,920
8616	LeeBoy Driveway/parking lot paver, 8'-15' sloping Electric screed	20,000



Tack Tanks

Model

LeeBoy L600	600 gallon capacity, Honda 4.8 HP gas engine, pull start LP burner, overnight heat, 6' hand spray wand with 40' hose reel, trailer mounted	Operating Weight (lbs) 3,380
--------------------	--	--



Battery Powered

Equipment

Model

AS502	Wacker Neuson rammer, 11" x 13" shoe, battery operated
AP1850E	Wacker Neuson vibratory plate, 20" wide, battery operated
CMX18	Cratos Mini Excavator, 7' dig depth, 40-51" expandable tracks, 48 V, battery powered system
SHERPA 100 ECO	Cratos SHERPA mini skid steer, 81" hinge pin, 30" OAW, battery operated
MCE 400-V2	Cratos MCE wheel barrow, up to 16 cu ft, 880 lb. capacity, mechanical dump, 8-10 hour run time
Twinca ES500	Cratos battery powered wheelbarrow, 1,100 lb. capacity, 31.5" OAW, up to 4 mph, 51" dump height, 9-10 hours run time
Twinca ES800	Cratos battery powered dumper, 1,764 lb. capacity, up to 4 Mph, 59" dump height, 8-10 hours run time, concrete chute available upon request



Attachments

Model

CMX18	Cratos bucket, hydraulic breaker
SHERPA 100 ECO	Cratos bucket, grapple bucket, hydraulic breaker, vacuum, pallet forks, floor scraper



Call or stop in today.
612-378-9558
rjequip.com

**Ruffridge Johnson
Equipment Company**
2065 Commerce Drive
Centerville, MN 55038

Rental
952-895-7033

Parts
952-895-7055

Service
952-895-7044

Hydraulics
952-895-7037

