

# Rental Guide



Scan here for  
digital version



## About RMS Rentals

RMS Rentals was started by Road Machinery & Supplies Co. in 1999 to be a one-stop shop for General and Specialty Construction Contractors. We offer a comprehensive line-up of equipment from industry leading manufacturers like, JLG, SkyTrak, Wacker Neuson, Allen Engineering, Multiquip, LeeBoy, Potain and many more.

RMS Rentals' parent company, Road Machinery & Supplies Co., is committed to supplying the equipment, support, and technology solutions that enables its customers to build infrastructure and industry in the communities it serves. Under the guidance of TJ Burns, RMS Rentals echoes this approach. Our professional staff thoroughly qualifies every rental and sales opportunity to assure you are getting the right machine at the right price, and machines are maintained and supported by factory trained parts and service technicians. We are committed to providing the services, technical support, and product solutions that let you complete projects on schedule and within budget.

## Training

RMS Rentals offers certified training programs for Telehandlers, Tower Cranes, and Mobile Elevating Work Platform (MEWP). Training courses involve both classroom and practical training and can accommodate small or large groups. For more information or to schedule training, please contact our office at 952-895-7033.

## Cooperative Purchasing

Sourcewell, formerly NJPA, is a service cooperative created to provide programs and services to members in the government, education, and non-profit sectors. Sourcewell is authorized to establish cooperative purchasing contracts on behalf of itself and its members. Membership is free and available to all government, education, and nonprofit entities.

[sourcewell-mn.gov](http://sourcewell-mn.gov)

### Products Offered

- LeeBoy
- Multiquip
- Wacker Neuson
- Atlas Copco
- Felling Trailers



## Our Team

### TJ Burns

General Manager, Rentals  
[tburns@rmseq.com](mailto:tburns@rmseq.com)  
952-895-7008

### Steve Jensen

Service Manager  
[sjensen@rmseq.com](mailto:sjensen@rmseq.com)  
952-895-7044

### Dave Oldenburg

Shop Supervisor  
[doldenburg@rmseq.com](mailto:doldenburg@rmseq.com)  
952-895-7033

### Scott Solberg

Crane Support Specialist  
[ssolberg@rmseq.com](mailto:ssolberg@rmseq.com)  
952-521-3130

### Erik Lund

Territory Manager  
[elund@rmseq.com](mailto:elund@rmseq.com)  
952-521-3108

### Victor Botler

Territory Manager  
[vbotler@rmseq.com](mailto:vbotler@rmseq.com)  
952-521-3116

### Tom Nickell

Territory Manager  
[tnickell@rmseq.com](mailto:tnickell@rmseq.com)  
612-240-9251

### Malia Oesterreich

Territory Manager  
[maliao@rmseq.com](mailto:maliao@rmseq.com)  
612-251-6633

## Product Lines





# Lifting & Hoisting

## Telehandlers

	Model		Operating Weight (lbs)
JLG	<b>G5-18A</b>	JLG, 5,500 lb. capacity 18' fork height	11,000
	<b>742</b>	JLG, 7,000 lb. capacity 42' fork height	22,300
	<b>943</b>	JLG, 9,000 lb. capacity 43' fork height	25,000
	<b>1055</b>	JLG, 10,000 lb. capacity 55' fork height	31,559
	<b>1255</b>	JLG 12,000 lb. capacity 55' fork height	33,960
SkyTrak	<b>6042</b>	SkyTrak, 6,000 lb. capacity 42' fork height	23,520
	<b>8042</b>	SkyTrak, 8,000 lb. capacity 42' fork height	25,365
	<b>10042</b>	SkyTrak, 10,000 lb. capacity 42' fork height	26,883
	<b>10054</b>	SkyTrak, 10,000 lb. capacity 54' fork height	27,200
	<b>12054</b>	SkyTrak, 12,000 lb. capacity 54' fork height	30,357
Dieci	<b>40.25</b>	Dieci, 8,556 lb. capacity 79' fork height, 360° rotation	38,580

## Telehandler-Attachments

Model		Capacity (lbs)
<b>MWP-4X116</b>	Haugen 4' x 9'6" work platform	1,000
<b>MIJ</b>	Haugen adjustable jib, fork pockets, 6'9"-12"	3,000-6,000
<b>Truss Boom</b>	JLG truss boom jib, pin on style, 12'	2,000
<b>MFE-636</b>	Haugen 6' fork extension. 2-1/2" x 5" fork	3,520
<b>MFE-736</b>	Haugen 7' 6" fork extension. 3" x 6" fork	3,520
<b>H200 Trash Hopper</b>	JLG 1.9 cy. self dumping	2,000
<b>1430 Trash Hopper</b>	Star 5 yard heavy duty, 3 sided	5,000
<b>MFSB/MSBT</b>	Haugen light material bucket. 96" wide	
<b>Lifting Hook</b>	JLG crane hook, fork slots, hook out to 24"	12,000
<b>MSPR-812</b>	Haugen adjustable spreader bar, 8'-12'	7,000-4,000
<b>Tower 8'</b>	Fits Lull, SkyTrak and JLG Telehandlers, adds 8' of lift height	
<b>Jersey Barrier Lift</b>	KL9000, 6-12" grip to handle 10-16' barrier	9,000

## Portable Tower Cranes

	Model		Lift Capacity (lbs)
Potain	<b>HUP M 28-22</b>	64.3' Hook height, 91.9' radius	4,850
	<b>HUP 40-30</b>	98' Hook height, 131' radius	8,800
	<b>IGO T85A</b>	125' Hook height, 148' radius	13,228
	<b>IGO T99</b>	125' Hook height, 157' radius	13,250
	<b>IGO T130</b>	122' Hook height, 164' radius	17,637
Attachments	<b>SL122-J2</b>	Potain tandem axle dolly, fits HD40/IGO50, HUP40-30, IGOT85A, IGOT99	
	<b>SL122-J3</b>	Potain triple axle dolly, fits HDT80, T130	

*Note: All cranes are load tested after assembly. Transportation, assembly, and disassembly are additional.*

## Boom Lifts

	Model		Operating Weight (lbs)
Electric	<b>E300AJ- Narrow</b>	30' Articulating boom, 36' working height, electric	15,705
	<b>E400AJ- Narrow</b>	40' Articulating boom, 46' working height, electric	14,900
	<b>X600AJ</b>	59' 3" Articulating boom w/jib, 66' working height, electric	6,571
Straight	<b>400S</b>	40' Straight boom, 46' working height	13,640
	<b>460SJ</b>	46' Straight boom w/jib, 52' working height	17,394
	<b>600S</b>	60' Straight boom, 66' working height	22,900
	<b>600SC</b>	60' Straight boom with full crawler bottom	22,500
	<b>660SJ</b>	66' Straight boom w/jib, 72' working height	25,400
	<b>660SJC</b>	66' Straight boom w/jib and crawler bottom	29,339
	<b>860SJ</b>	86' Straight boom w/jib, 92' working height	36,888
	<b>1350SJP</b>	135' Straight boom w/jib, 141' working height	45,000
Articulated	<b>450AJ</b>	45' Articulating boom w/jib, 51' working height	14,150
	<b>600AJ</b>	60' Articulating boom w/jib, 66' working height	22,691
	<b>800AJ</b>	80' Articulating boom w/jib, 86' working height	34,738
	<b>1250AJ</b>	125' Articulating boom w/jib, 131' working height	44,000
Towable	<b>T500J</b>	50' Platform height, 30' horizontal reach, 500 lb. platform capacity, 24VDC electric power	4,800
Attachments	<b>Glazing Package</b>		
	<b>CST280</b>	Skywelder 280 Amp.	

*Note: All diesel machines are equipped with Sky Power generators.*

## Scissor Lifts

	Model		Weight/Capacity (lbs)
Electric	<b>1930ES</b>	JLG 19' electric, narrow profile, 25' working height, 30" wide	2,750/500
	<b>2630ES</b>	JLG 26' electric, narrow profile, 31' working height, 30" wide	4,750/500-800
	<b>2646ES</b>	JLG 26' electric, wide stance, 31' working height, 46" wide	4,770/1,000
	<b>3246ES</b>	JLG 32' electric, wide stance, 38' working height, 46" wide	4,975/700-1,000
Rough Terrain	<b>RT2669</b>	JLG 26' diesel, 69" wide, 32' working height	8,058/1,500
	<b>RT3369</b>	JLG 33' diesel, 69" wide, 39' working height	8,856/1,000

## Vertical Personnel Lifts

Model		Weight/Capacity (lbs)
<b>1230ES</b>	JLG 12' electric, narrow profile, 30" width, mast lift, 18' working height	1,740/500
<b>GR20</b>	Genie 20' electric, narrow profile, mast lift, 26' working height	2,450/350
<b>AWP25 SDC</b>	Genie 25' electric, push around, outrigger setup 5'1" x 4'5"	727/350

*Note: 20" x 22" narrow platforms are available upon request.*

# MEWP

## Material Lifts

Model		Weight/Capacity (lbs)
2412	Contractor lift, 12' 11" maximum lift height	195/450
2416	Contractor lift, 16' 11" maximum lift height	243/450
2118	Contractor lift, 18' 6" maximum lift height	321/650
2124	Contractor lift, 23' 11" maximum lift height	366/650
R-180	Roust-A-Bout, 18' maximum lift height	403/1,500

*Note: Two speed winches and fork extensions are included. Pipe cradles available upon request.*

## Digging & Loading

### Compact Excavators

Combustible	Model		Operating Weight (lbs)
	PC35MR	Komatsu 11' 4" dig depth, 24.4 HP, rubber tracks, enclosed cab	8,532
	PC45MR	Komatsu 11' 11" dig depth, 38 HP, rubber tracks, enclosed cab	11,001
	PC55MR	Komatsu 12' 4" dig depth, 38 HP, rubber tracks, enclosed cab	11,618

*Note: Hydraulic thumbs available upon request. Dig bucket sizes available are 12", 18", or 24".*

### Battery

CMX18	Cratos 7' dig depth, 40-51" expandable rubber tracks, 48V battery.	3,608
-------	--	-------

*Note: Dig bucket sizes available are 12" and 15".*

### Excavator & Track Loader Breakers

Model	
PH3	Hydraulic breaker with mtg kit, 750 ft. lbs.
FX25	Hydraulic breaker, 275 ft. lbs. (CMX18)

*Note: Point and chisel wear is additional.*

### Loaders

Wheeled	Model		Operating Weight (lbs)
	SHERPA	Battery, 81" hinge pin height, OAW 30", wheelbase 26"	1,800

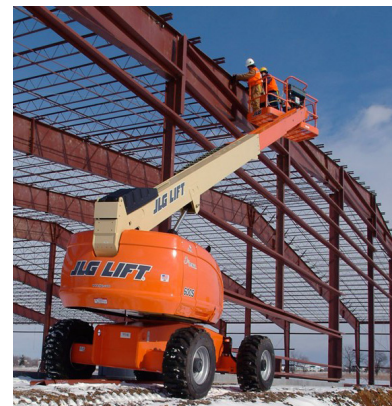
*See page 10 for attachment options.*

## Demolition

### Robot

Model		Operating Weight (lbs)
DXR 145	Husqvarna remote controlled, 174" upward reach, 24.8hp, 360 degree rotation. Available options: 12" & 20.5" dig bucket, 30" smooth bucket, rotating grapple, hammer, concrete crusher	2,172

*Note: Point and wear charges are additional.*



# Compaction

## Rammers

	Model		Operating Weight (lbs)
Combustible	BT50	Working width 230 mm, rammer, 4-stroke engine	128
	BT60	9" x 13" Shoe, rammer, 4-stroke engine	128
	BS50-2	10" x 13" Shoe, rammer, 2 or 4-stroke engines	129
	BS60-4	11" x 13" Shoe, rammer 2 or 4-stroke engines	154
Battery	AS502	11" x 13" Shoe, battery operated, Includes 2 batteries, 1 charger, estimated run time 30 min.	155

## Vibrating Plates

	Model		Operating Weight (lbs)
	MVC64VHW	14" X 21" Plate w/ water tank	151
	MVC82VTHW	18" X 22" Plate w/ water tank	181
	MVC88VTHW	20" X 21" Plate w/ water tank	229
	WP1550A/W	20" x 23" Optional water tank, plate compactor	190
Battery	AP1850E	20" Wide plate, battery operated, Includes 2 batteries, 1 charger, estimated run time 45 min.	223
	BPU2540A	16" Wide, reversible plate compactor	309
	MVC308GH	18" Wide, reversible plate compactor	717
	BPU3050A	20" Wide, reversible plate compactor	366
	BPU4045A	23" Wide, 9 HP, reversible plate compactor	679
	BPU5545A	23" Wide, 15 HP, reversible plate compactor	715
	DPU6555	30" Wide, reversible plate compactor, diesel	988

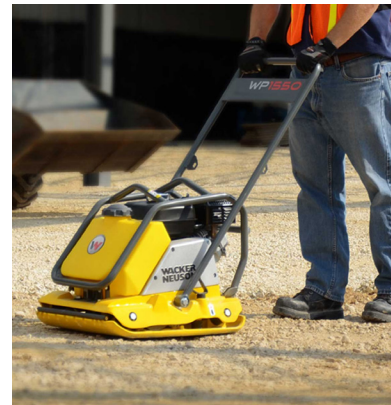
## Rollers

	Model		Operating Weight (lbs)
BOMAG:	BMP8500	24" to 33" Double drum sheepfoot, walk behind roller, remote control, diesel	3,516
	BW900-50	36" Smooth double drum roller, gas	2,646
Wacker Neuson:	BW120SL-5	47.2" Smooth double drum roller, diesel	6,393
	RTLX-SC3	24" to 32" Double drum sheepfoot, walk behind roller, remote control, diesel	3,247
	RD12	36" Smooth double drum roller, gas	2,500
	RD28-120	47.2" Smooth double drum roller, diesel	5,941

# Concrete/Masonry

## Concrete Buggies

	Model	
Combustible	AR16	Allen 16 cu ft, stand-on, gas powered
	AR16-LP	Allen 16 cu ft, stand-on, propane powered electric start
	AR21	Allen 21 cu ft, stand-on, gas powered
	AR21-LP	Allen 21 cu ft, stand-on, propane powered electric start
	SC75PD	Canycom 16 cu ft, pivot dump, rubber tracks
	SC75PD-LP	Canycom 16 cu ft, pivot dump, rubber tracks, dual fuel
	AT16PBES	Allen 16 cu ft, stand-on, gas powered, rubber track
Battery	MCE400-VR	Battery wheelbarrow, 880 lb. capacity, up to 16 cu ft, mechanical dump, 8-10 hour run time, 287 lb. overall weight
	Twinca ES500	Battery powered, 32 OAW, 1,100 lb. capacity, up to 4 Mph, 51" dump height, 9-10 hours run time





# Concrete/Masonry

## Concrete Buggies

### Model

Battery	<b>Twinca ES800</b>	Battery powered dumper, 1,764 lb. capacity, up to 4 Mph, 59" dump height, 8-10 hours run time, concrete chute option available
	<b>EZ-750</b>	Battery powered wheelbarrow, up to 9 cu ft, 750 lb. capacity, 32 OAW, 0-4 Mph, 6-7 hour run time

## Concrete/ Mortar Mixers

### Model

<b>MC64SH8</b>	MultiQuip concrete mixer, 6 cu ft., Honda
<b>MC945H8</b>	MultiQuip concrete mixer, 9 cu ft., Honda
<b>WM90</b>	MultiQuip mortar mixer, 9 cu ft., gas

*Cleaning charges may apply.*

## High Cycle Generators

### Model

<b>GDP5H</b>	MultiQuip high cycle gas generator, shafts & heads available
--------------	--

## Concrete Saws

### Model

<b>X150</b>	Soff-Cut 6" blade, 1-3/16" max cut depth
<b>X2500</b>	Soff-Cut 10" blade, 1-1/2" max cut depth
<b>X4000</b>	Soff-Cut 12" or 13.5" blade, 3" max cut depth, dual-fuel
<b>X4200</b>	Soff-Cut 12" or 13.5" blade, 3" max cut depth
<b>X5000</b>	Soff-Cut 14" blade, 4" max cut depth
<b>FS400</b>	Husqvarna walk behind saw, 14" or 18" blade, 11 hp Honda, water tank
<b>DS18</b>	Edco walk behind saw, 18" blade, electric, max. cut depth 6.75

*Note: Cured concrete and asphalt blades are available for rent or purchase.*

*Propane units available upon request. Must purchase soff-cut, early entry blades.*

## Vacuums/Dust Collectors

### Model

<b>T4000</b>	Soff cut vacuum, gas powered, 288 cfm air flow
<b>V1000 LP</b>	Soff-Cut vacuum, 39 gal. capacity
<b>S26</b>	Husqvarna HEPA dust collector, electric
<b>Vac 200</b>	Edco vac system, twin motors, 9 gallon capacity, electric
<b>Vac 290</b>	Edco vac system, triple electric motors, 9 gallon capacity, electric

## Concrete Buckets

### Model

<b>413R</b>	Gar-Bro 1/2 yard, with side chute, 16" gate, crane hook, 45" diameter and 38" high
<b>HCH-M75</b>	Haugen 3/4 yard concrete bucket w/ fork pockets
<b>4920</b>	Gar-Bro 3/4 yard combo bucket w/ fork pockets
<b>427R</b>	Gar-Bro 1 yard, with side chute, 16" gate, crane hook 56" diameter and 46" high
<b>440R</b>	Gar-Bro 1.5 yard, with side chute, 63" diameter and 53" high
<b>454R</b>	Gar-Bro 2 yard, with side chute, 16" gate, crane hook 66" diameter and 58" high
<b>483R</b>	Gar-Bro 3 yard, with side chute, 16" gate, crane hook 70" diameter and 59" high



# Concrete/Masonry

## Concrete Trowels

### Model

**TWVE24/CA4HC/CT24**

**Gas/Propane** 24" Walk behind edger, 4 hp Honda

**TWP436/J36H**

**Gas/Propane** 36" Walk behind

**TWP446/B46H**

**Gas/Propane** 46" Walk behind, 8 hp Honda

**MK8-75**

5' 3" Double ride-on, 13 hp Honda, 450 lb. mechanical

**MP215/MP235**

**Gas/Propane** 6' Double ride-on, 22 hp Honda, mechanical

**HDX600/HTXG6DF**

8' Double ride-on gas/propane/diesel hydrostatic drive & pitch

**HDX760**

10' Double ride-on, diesel, hydrostatic drive & pitch

*Note: Finish blades are provided – pans are available for purchase only. Transport dollies available upon request. Propane and units with scrubbers available upon request.*



## Concrete Floor Preparation

### Model

**CPL-8-1.5L**

Edco 8" mini scarifier, 1.5 HP, 110 volt, 8" x 1/32" at 175-250 sq f./hr

**CPM8-9H**

Edco 8" scarifier, 9 HP Honda, 190 lbs, 8" x 1/8" at 350-500 sq ft/hr

**CPM8-5E**

Edco 8" scarifier, 5 HP electric, 220 volt, 8" x 1/8" at 350-500 sq ft/hr

**CPU-10FC-20H**

Edco 10" scarifier, 20 HP Honda, 530 lbs, 10" x 1/8" at 500-750 sq ft/hr

**TG-10-11HP**

Edco 10" turbo grinder, 11 HP Honda, 180 lbs, 10" x 1/16" at 400-500 sq ft/hr

**TG-10-5**

Edco 10" turbo grinder, 5 HP electric, 208 lbs, 10" x 1/16" at 400-500 sq ft/hr

**2EC-1.5B**

Edco 27" grinder, dual head, 1.5 HP electric, 11" x 1/32" at 200-2500 sq ft/hr

**CD-5**

Edco 5-Head Scabbler, pneumatic, 160cfm, 29" x 1/4" at 250 sq ft/hr

*Note: Grinders rented out with a set of accessories. Additional accessories if used will be additional.*



## Floor Strippers

### Model

**T2100 Pro**

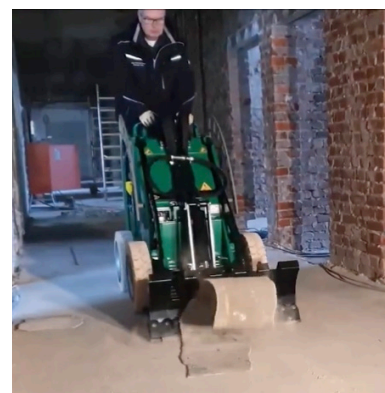
60 HP DF Motor, working width 26", 54.5" x 27.5" X 62" OAD, 2,780#, removal rates: Carpet 900-1,800 sq. ft./hr, VCT/VAT 1,000 – 2,500 sq. ft./hr, sheet vinyl 600-8—sq. ft./hr, Glue Down Hardwood 300-1,000 sq. ft./ hr, Elastomeric Coatings 400-800 sq. ft./ hr, Ceramic Tile 25-500 sq. ft./hr

**T2200 Pro**

55 HP LPG Engine, 64" x 27.5" x 62" OAD, 2,310#, : Carpet up to 4,000 sq. ft./hr, VCT/VAT Up to 4,000 sq. ft./hr, Sheet Vinyl Up to 4,000 sq. ft./hr, Glue Down Hardwood Up to 2,000 sq. ft./ hr, Elastomeric Coatings Up to 2,400 sq. ft./ hr, Ceramic Tile Up to 1,900 sq. ft./hr

**SHERPA 100 ECO** With floor scraper attachment

*Note: Blades are available for purchase only.*





# Concrete/Masonry

## Concrete Screeds

### Model

**Screedemon\***  
**Truss Screed**

MBW single head screed, 10', 12', 14', 16' board, 4-stroke Honda  
MBW vibratory aluminum truss screed, w/hydraulic winches,  
60' total length available

**Battery**

**M18\***

MBW battery powered ScreeDemon, up to 14' Board

*\*Indicates Handheld*



## General Equipment

### Generators, Light Tower

#### Model

**G25**

20 kW, diesel powered, trailer mount, 63 db

**DCA25**

20 kW, diesel powered, trailer mount, 65 db

**G50**

42 kW, diesel powered, trailer mount w/brakes, 66 db

**G70**

58 kW, diesel powered, trailer mount, cold weather ready

**DCA70**

62 kW, 70 kVA, diesel powered, trailer mount, power balance kit, 65 db

**DCA125**

100 kW, 125 kVA, diesel powered, trailer mount, power balance kit, 66 db

**GP5600**

5,600 watt, Honda gas engine

**GR Series**

350 watt LED lights, diesel, 6 kW, 195 to 214-hour run time

*Note: Rates for above generators and light plants are based on "single shift" use.*

*Double time (2 shifts) = rate x 1.5, Triple time (3 shifts) = rate x 2*

*Turtles & cords available upon request.*



### Heat & Fuel

#### Heat

**MH1000**

Allmand 1M BTU, 16" Duct Box, Kubota diesel

#### Fuel

**EV500**

500 gallons, 7 gauge steel, GVWR 6,000 lbs., electric, all axles



### Air Compressor, Portable

#### CFM

**110**

Atlas Copco or Chicago Pneumatic, diesel powered, towable

**185**

Atlas Copco or Chicago Pneumatic, diesel powered, towable

**400**

Atlas Copco or Chicago Pneumatic, diesel powered, towable

**750**

Atlas Copco or Chicago Pneumatic, diesel powered, towable

*Note: Hoses, Couplers, & Accessories available upon request.*

### Self Dumping Hoppers

#### Model

**H-50N**

Galbreath 1/2 yard, fork pockets

**H-75**

Galbreath 3/4 yard, fork pockets

**H-100**

Galbreath 1 yard, fork pockets

**H-150**

Galbreath 1.5 yard, fork pockets

**H-200**

Galbreath 2 yard, fork pockets

**H-300**

Galbreath 3 yard, fork pockets

**H-350 LP**

Galbreath 3.5 yard, fork pockets

**H-400**

Galbreath 4 yard, fork pockets

#### Capacity (lbs)

4,000

5,000

6,000

6,000

6,000

5,000

5,000

4,000



# General Equipment

## Industrial Fork Lifts

### Model

<b>FG25ST</b>	Komatsu 5000# capacity, 15' lift height, propane, fork adjustments
<b>FG30SHT</b>	Komatsu 6000# capacity, 15'10" lift height, propane

Options of pneumatic or solid non-marking tires.

**Operating Weight (lbs)**  
8,000

10,000

## Paving

### Pavers

### Model

<b>1000</b>	Driveway paver, hopper style, 8'-13' screed
<b>5300</b>	Path paver, 4' to 9' HD screed
<b>8510/8515/8520</b>	Driveway/parking lot paver, 8'-15' legend screed
<b>8608</b>	125 hp Kubota tier 4 final engine, electric screed
<b>8616</b>	Driveway/parking lot paver, 8'-15' sloping Electric screed

**Operating Weight (lbs)**  
10,000

13,000

17,200

21,920

20,000

### Tack Tanks

### Model

<b>L600</b>	600 gallon capacity, Honda 4.8 HP gas engine, pull start LP burner, overnight heat, 6' hand spray wand with 40' hose reel, trailer mounted
-------------	--

**Operating Weight (lbs)**  
3,380

## Battery Powered

### Equipment

### Model

<b>AS502</b>	Wacker Neuson rammer, 11" x 13" shoe, battery operated
<b>AP1850E</b>	Wacker Neuson vibratory plate, 20" wide, battery operated
<b>CMX18</b>	Cratos Mini Excavator, 7' dig depth, 40-51" expandable tracks, 48 V, battery powered system
<b>SHERPA 100 ECO</b>	SHERPA mini skid steer, 81" hinge pin, 30" OAW, battery operated
<b>MCE 400-V2</b>	MCE wheel barrow, up to 16 cu ft, 880 lb. capacity, mechanical dump, 8-10 hour run time
<b>E-750</b>	Power Pusher wheel barrow, up to 5 cu ft liquid volume and 9 cu ft solid volume, 1,000 lb. capacity, mechanical dump, galvanized steel tub
<b>M18</b>	MBW battery powered SreeDemon, 18V battery
<b>Twinca ES500</b>	Battery powered wheelbarrow, 1,100 lb. capacity, 31.5" OAW, up to 4 mph, 51" dump height, 9-10 hours run time
<b>Twinca ES800</b>	Battery powered dumper, 1,764 lb. capacity, up to 4 Mph, 59" dump height, 8-10 hours run time, concrete chute available upon request
<b>EZ750</b>	Battery wheelbarrow, up to 9 cu ft, 750 lb capacity, 32" capacity, 32" OAW, up to 4 mph, 6-7 hours run time

### Attachments

### Model

<b>CMX18</b>	Bucket, hydraulic breaker
<b>SHERPA 100 ECO</b>	Bucket, grapple bucket, hydraulic breaker, vacuum, pallet forks, floor scraper



# Rental Terms & Policies

---

**1. Credit:** All rentals require a customer to have an open account and are subject to approval by our credit department. Customer is responsible for payment of late fees for overdue accounts.

## **2. Insurance**

A. Liability: proof of General Liability insurance must be provided to RMS prior to taking possession of equipment. The minimum liability coverage amount is \$1,000,000 per occurrence, with RMS named as an additional insured.

B. Physical Damage: proof of physical loss insurance is required for the value of each piece of equipment rented. A damage waiver for physical loss can be provided by RMS at an additional cost of 15% of the rental rate billed on each rental invoice. Customer abuse and/or operator error will not be covered under damage waiver protection.

**3. Contract:** A rental contract must be signed per DocuSign for each separate order of rental equipment by the customer. In addition, the renter is required to provide complete job site information where equipment will be located including the job number and corresponding bond information, if applicable. Renter is responsible to notify RMS of any/all job or location changes of the rented equipment.

**4. Use:** Customer will ensure that operators and any personnel hired to haul equipment are familiar with the operation of the rental equipment and have read the operator's manual. If the operator or customer has any questions regarding the proper operation or maintenance procedures, they should contact the RMS service department at 952-895-7044.

**5. Rental Purchase Option:** 100% of the rent paid to apply toward purchase for the first six (6) months less interest at 3% over prime on the declining balance. After this time rent paid will not be applied to purchase. All repairs and service work not covered by warranty will be added at the time of conversion.

**Note:** Please note that on the previous rental guide pages, the operating weight provided is an estimate and will vary depending on equipment options.

Contact your Territory Manager or store location for rental rates. It is always the responsibility of the customer, and its designated trucking company, to ensure that the height of the equipment, after loading, meets the bridge height requirements of its haul.

**6. Hauling:** Customer is responsible for all hauling charges to and from job sites.

## **7. Hours Allowed:**

- Daily – 8 hours
- Weekly – 40 hours or 5 days
- 4 Weeks – 160 hours

Extra shift charges will be applied when applicable for overtime usage of machines

**8. Repairs & Maintenance:** While the units are in the possession of the renter, renter is responsible for normal preventative maintenance, as required by the manufacturer. Such items include oil changes, filter changes, greasing, etc.

Any damage to the equipment due to renter abuse or negligence will be charged to the lessee on return of the rental equipment.

**9. Additional Responsibilities-Renter:** Ensure that equipment is properly secured to transport vehicles. Observe legal weights and dimensions.

Authorize transportation provider to sign shipping papers, checkout/in forms and safety checklists. Charges for abnormal tire wear including cuts, abrasions, and punctures.

Charges for manuals or keys not returned. Returning machine with full fuel tank or paying for fuel used.

Cleaning labor in excess of 1 hour, which would include shoveling of tracks.

Excess wear on ground engaging tools, wear items, and undercarriage.

Additional charges as listed on the rental rate sheet for type of equipment rented.







Call or stop in today.  
**rmsrentals.com**

### **RMS Rentals**

12520 Quentin Ave. S  
Suite 100  
Savage, MN 55378

---

### **Rental**

952-895-7033

### **Parts**

952-895-7055

### **Service**

952-895-7044

### **Hydraulics**

952-895-7037

**@RMSEquipment**

